

# BAGGING MACHINES

## **nomatech**

YOUR PACKAGING MACHINES



### GOLEM FLEXI

**FILLING LINE FOR BULK BAGS UP TO 75 LITERS IN VOLUME, WITH ROBOTIC PALLETIZATION**

**Output: up to 600 packages/hr.\***

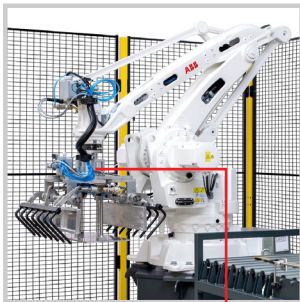
Device dimensions: w 7800 mm | d 3740 mm | h 2500 mm w/o dosing unit | individual request

**Bag dimensions: max. w 550 mm | d 180 mm | h 1100 mm | individual request**

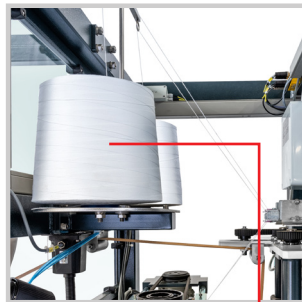
Bag volume: up to 75 l | individual request

**Bag closing: sewing | glueing | sealing | stretch band**

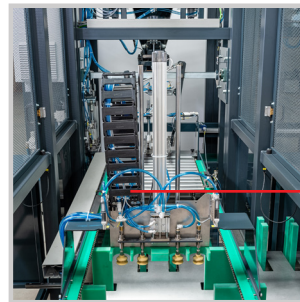
Packed products: loose (powder, granules) | small pieces



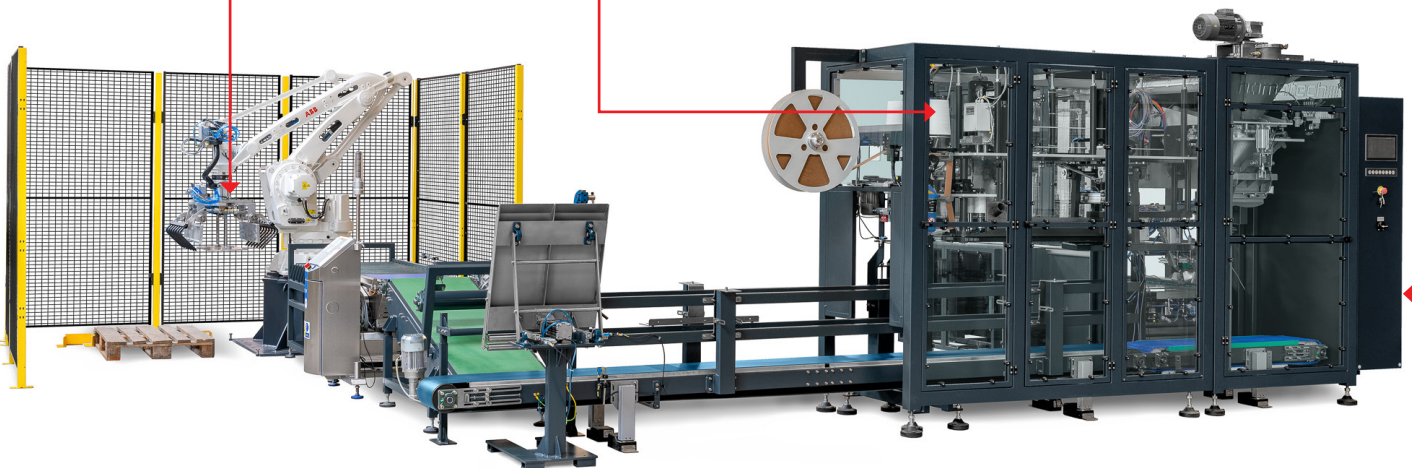
Gripping head



Sewing thread



System for empty bag manipulation



\*depending on packed amount, type of product and size of package

# GOLEM STANDARD



## BAGGING LINE FOR PREMADE LARGE VOLUME BAGS FILLING

Output: up to 300 packages/hr.\*

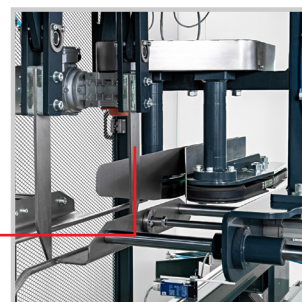
Device dimensions: w 4900 mm | d 3900 mm | h 2290 mm w/o dosing unit | individual request

Bag dimensions: w 600 mm | h 1100 mm

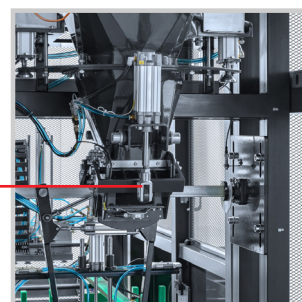
Bag volume: up to 25 l

Bag closing: sewing | glueing | sealing | stretch band

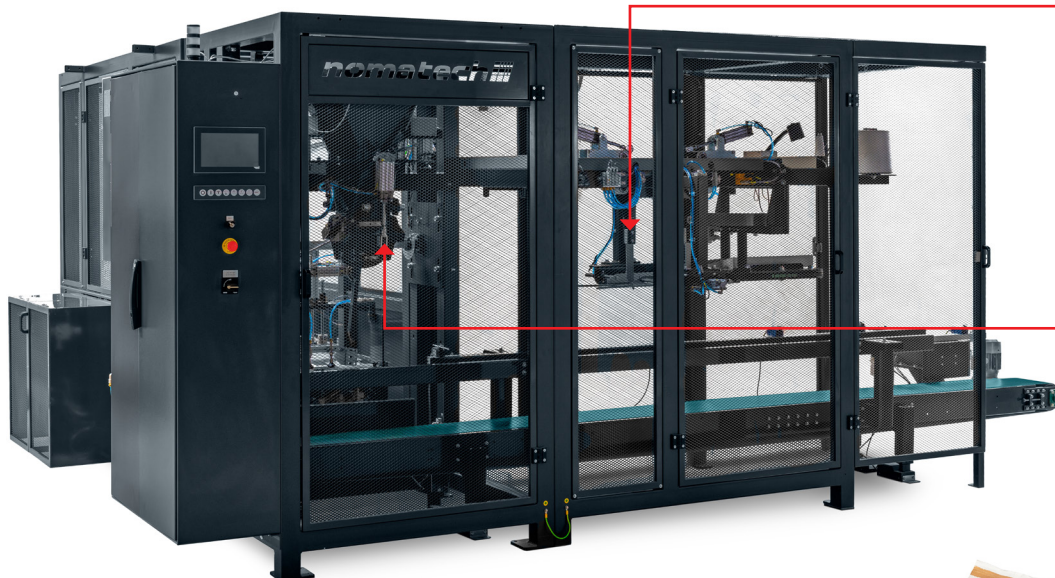
Packed products: loose (powder, granules) | small pieces



Guide to sewing head



Dosing station



\*depending on packed amount, type of product and size of package

## OUR MANUFACTURE PROGRAM:

**TOBOGAN** Vertical packaging machines  
**VOLCANO** Multilane stickpack packaging machines  
**GOLEM** Bulk bags packaging machines  
**BOX** Cartoning machines

**CUBE** Brickpack packaging lines  
**CASE** Group packaging casepackers  
**ROBO** Manipulation lines, palletization  
**LUNA** Filling and mixing lines  
Wide range of accessories and more.



NOMATECH s.r.o.  
info@nomatech.net | www.nomatech.net | +420 317 843 235  
Vlasáková 1635 | 258 01 Vlašim | Czech Republic  
Tradition since 1965



Co-funded by  
the European Union

**nomatech**  
YOUR PACKAGING MACHINES